



English

HERB SERIES

Tending & Harvesting Guide

SEED KIT TYPE: _____

PLANTING DATE: _____



C O N T E N T S

Planting Your Garden

Plant Your Garden	2
-------------------------	---

Tending Your Garden

Remove Domes	3
Add Water.....	4
Feed Garden	4
Raise Lamp Hood (<i>Light[s]</i>).....	5
Keep Your Garden Healthy.....	6
Special Tips for Basil & Epazote.....	7
Plant Problems & Remedies.....	10

Harvesting Your Garden

Harvest Your Garden.....	11
--------------------------	----

Appendices

Reminders About Planting Your Garden.....	21
Questions & Answers – Light(s)	22
Set Your Light Timer	22
Troubleshooting	23
Replace Bulb(s).....	25

Whoever
plants a garden
plants happiness.

– CHINESE PROVERB

PLANTING YOUR GARDEN

A little bit of care for your Garden will ensure rapid growth and bountiful harvests. You will see sprouts in a few days. In 3-5 weeks, you will see your seeds transformed into aromatic and flavorful herbs ready for your table.

Plant Your Garden

Whether this is the first or fifth garden you are planting in your AeroGarden, you will need to reference your *Quick Start Guide*.

If you have planted a garden in your AeroGarden prior to this one, please refer to "*Replanting Your AeroGarden*" in the *Quick Start Guide* before you proceed.

If you no longer have your model's *Quick Start Guide*, you can obtain the latest version of it at www.aerogardensupport.com

Each *Herb Series Seed Kit* (except *7-Pod Seed Kits*) has *Seed Pods* that are labeled, *Tall*, *Medium* or *Short*. This helps to determine the best position for each *Seed Pod* in the *Grow Surface*, ensuring each plant gets enough light and has room to grow.

The following are descriptions of each plant height and the best locations for them in your AeroGarden. Consult your *Quick Start Guide* for model-specific planting instructions.

- Tall plants tend to grow faster and branch out quickly – they do best in the **Back** openings.
- Medium plants grow a little more slowly and/or tend to be a bit bushier – they do best when planted in **Side** openings.
- Short plants are slower growing and/or mature into smaller plants – they are best suited for growing in a **Front** opening.



TENDING YOUR GARDEN

Please take a moment to review this section shortly after planting your Garden (see page 21 for *Reminders About Planting Your Garden*).

Remove Domes

- A few days after planting your AeroGarden, tiny plants will appear through the holes in each *Seed Pod Label*.

When this occurs, remove the *Domes* from each *Seed Pod* with emerging plants and discard or recycle. Do not remove the *Label*!

- To reduce plant stress, we recommend removing the *Domes* shortly after the light(s) turn off or near the end of the light cycle.
- You do not need to thin your plants as the AeroGarden can support multiple plants in each *Seed Pod*.



Each *Seed Pod Label* shows the number of days until seeds sprout.



Don't let this happen!
If your plant is curled inside the *Dome*, it was left on too long. *Immediately* remove *Dome*.

Never remove *Labels*. They promote germination, inhibit algae growth and identify your plants.

Add Water

There should always be water in the Bowl of your AeroGarden. For instructions, see the “Add Water Using a Spouted Container” section in your *Quick Start Guide*.

- Use room-temperature water. Very hot or very cold water will hurt your plants.
- We recommend using municipal tap, bottled or purified water. Well or softened water **SHOULD NOT** be used because the extra minerals in these sources may be harmful to aeroponically grown plants.

Feed Garden

Every 2 weeks you will need to add one nutrient tablet (3-pod AeroGardens) or two nutrient tablets (6- or 7-pod AeroGardens) to the Bowl. For instructions, see “Add Nutrients” (*Feed Garden - Basic Feeding*) in the *Control Panel Features* section of your *Quick Start Guide*.



International Basil Seed Kit instructions

For *International Basil Seed Kits* (available for 7-pod AeroGardens only), we recommend alternating between “Basic Feeding” and “Rinse & Refill” steps.

Basic Feeding

First feeding after planting your Garden, follow the “Basic Feeding” instructions in your *Quick Start Guide*.

Alternate – Rinse & Refill and Basic Feeding

4 weeks after planting your Garden, begin alternating between “Rinse & Refill” and “Basic Feeding.”

To simplify tracking, cross off the appropriate box on the *Feeding Schedule* (at right) after each feeding.

Basil Growing Nutrients FEEDING SCHEDULE					
Cross off one box after each feeding.					
1st	2nd	3rd	4th	5th	6th
<input type="checkbox"/>	<input type="checkbox"/>	<input type="checkbox"/>	<input type="checkbox"/>	<input type="checkbox"/>	<input type="checkbox"/>
Rinse & Refill	Basic	Rinse & Refill	Basic	Rinse & Refill	Basic

Continued on next page

Feed Garden *(Continued)*

Rinse & Refill *(International Basil Seed Kit only)*

- 1 Unplug AeroGarden and remove *Bowl* from *Base* and bring *Bowl* to a sink.
- 2 Remove *Grow Surface* from *Bowl* and place on a counter near sink.
- 3 Empty contents of *Bowl* into sink and rinse *Bowl*. Use only water.
- 4 Fill *Bowl* with **room-temperature** water up to “*Fill To Here*” and set *Bowl* on counter.
- 5 Place *Grow Surface* back on *Bowl*, place *Bowl* on *Base* and plug in AeroGarden.
- 6 Add 2 nutrient tablets from “*Growing Nutrients*” bag and press the *Reset* button.

Note: We recommend checking for bugs every time you add nutrients. See Troubleshooting on page 24 of this Guide for details.

**Quick Start Guides available at:
www.aerogardensupport.com**

Raise Lamp Hood *(Light[s])*

As your plants begin to grow, you should provide 1-2” (2.5-5cm) of space between the top of plants and the light(s).

For instructions, refer to the “*Raise Lamp Hood (Light[s])*” section in your *Quick Start Guide*.

If *Grow Bulb(s)* are too close to plants, the leaves may brown and burn. If they are too far away, your plants will “stretch” toward the light(s) and look unhealthy.

Keep Your Garden Healthy

Keeping a watchful eye on your Garden is not only a joy, but also a smart way to make sure your plants stay healthy.

As your plants grow, you may see some dead or brown leaves around the base of plants. This is perfectly normal.

- Remove these leaves with scissors or pinch off with your fingers.
- Keep *Grow Surface* clear of dead leaves.



Uprooted Chives

You may see chives that look like they're "jumping out" of the *Seed Pod*.

This is not a problem. Sometimes delicate chive roots don't anchor properly in the Grow Sponge.



There are many chive seeds in each *Seed Pod*, so you will still have a bountiful bunch of chives.

Special Tips for Basil & Epazote

Pruning 3- to 5-Week-Old Plants

About 3 to 5 weeks after planting your Garden, it is time to prune young basil and epazote plants to encourage them to branch out. Plants with many branches will produce large quantities of herbs. Remember, all your clippings are edible, so enjoy the fresh sprigs!

To Prune Basil:

- From base of basil plant, follow the main stem up past 3 sets of leaves.

NOTE: There may be more than one basil stem in the Seed Pod that needs pruning.



- Cut main stem just above the 3rd leaf set.



Photo at right shows how plant should look after first pruning.



Prune Epazote when plant is about 4" (10cm) tall:

- Cut main stem above a set of leaves to bring plant to the same height as slower growing plants in your Garden.

NOTE: There will likely be more than one epazote stem in the Seed Pod that needs pruning.

- Cut main stem just above the 4th side stem.



Photo at right shows how the plant might look after this first pruning. Epazote will be about 2" (5cm) tall after first pruning.

NOTE: Epazote should not be used by pregnant or nursing women.



Pinch Plants (Ongoing after 4 weeks)

Pinching will help your plants grow full and yield larger quantities of basil and epazote.

Initially, your basil and epazote plants will grow taller than the other herbs in your Garden. Pinching the plants (or cutting with scissors) will allow you to keep the light(s) close to the other slower growing herbs, providing them with the intense light needed to grow.

Continued on next page

Special Tips for Basil & Epazote *(Continued)*

Pinch Plants (Ongoing after 4 weeks)

(Continued)

Pinch Basil:

Pinch basil plant just above the uppermost set of leaves (growth points) every week.

Use these clippings in your favorite basil recipes.



Pinch Epazote:

Pinch or cut stems directly above a set of leaves (growth point) to keep plants at the same height as other plants in your Garden.

Prune Basil Flowers and Flower Buds

If you see flowers and/or flower buds on your basil plant, remove them.

Cut back the flowering/budding stalk just above a set of leaves no more than halfway down the plant stem.



This may seem drastic, but pruning your plant will actually stimulate growth and help the basil maintain excellent flavor.

*P*lant Problems & Remedies

These pictures show plants from an *Herb Series Seed Kit* that are stressed. Follow suggestions to restore your Garden's health.



Wilted

Plants are not getting enough water. Check water level.



Burned

Plant is too close to *Grow Bulb(s)*. Raise the *Lamp Hood*.



Curled Inside *Dome*

Dome was left on too long. Immediately remove *Dome*.

***Quick Start Guides* available at:
www.aerogardensupport.com**

HARVESTING YOUR GARDEN

Harvest Your Garden

About 5 weeks after planting your Garden, you can begin harvesting all of your herbs.

Harvest your herbs with pruning shears, household scissors, or by gently pinching off with your fingers. Following the harvesting tips below will help keep your plants productive and healthy.

Harvesting Advice for All Herbs

- Do not remove more than a third of the leaves or stems from any one plant at a time.
- Continue to harvest up to a third of each plant per week. Leaves and stems will be replaced by new growth.
- Harvest just before using for the best flavor.
- As you harvest, try to keep the plants at about the same height so that they all receive the optimum amount of light.
- After harvesting your herbs, lower *Lamp Hood* if necessary (see *Quick Start Guide* for instructions).



**Quick Start Guides available at:
www.aerogardensupport.com**

Harvest Chives

When chives start to hang over the edge of Garden and grow up into light(s), it's time to harvest.

NOTE: Chives can be harmful to pets if ingested.

Please keep your AeroGarden out of the reach of your pets.



- Gather up all the chives and hold them with one hand. With other hand, cut no more than 1/3 of the way down from the tips.

Tips will continue to grow and the plant will also produce new shoots after harvesting.



- An entire stem can also be used by cutting at the base.

This is what your chives might look like after harvesting.



Continued on next page

Harvest Your Garden *(Continued)*

Harvest Parsley and Cilantro

Harvest parsley and cilantro near the base of the plant, cutting an entire stem – just the stem, not the entire plant!

Parsley shown, but instructions also apply to cilantro.



- Select the oldest stems, found near outer edges of plant. These stems are generally wider than the younger ones and the leaves may have some yellow around the edges.



- Remove stems that shade other plants in your Garden.

This is what your parsley might look like after harvesting.



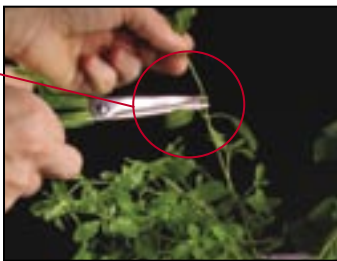
Harvest Savory, Oregano, Marjoram, Tarragon and Thyme

Harvest the tallest stems that are growing into light(s) and/or spreading out to other parts of the Garden.

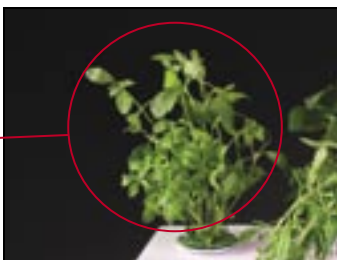
Oregano shown, but instructions also apply to savory, marjoram, tarragon and thyme.



Prune just above a set of leaves (growth point), and not more than 1/3 of the way down the stem.



This is what your oregano might look like after harvesting.



Continued on next page

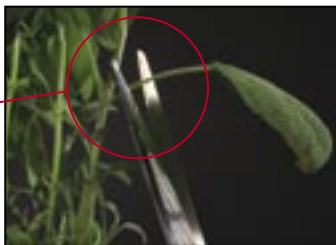
Harvest Your Garden *(Continued)*

Harvest Sage

Harvest single leaves, starting with those near the base of plant.



- Cut or pinch off leaves where they meet the stem.

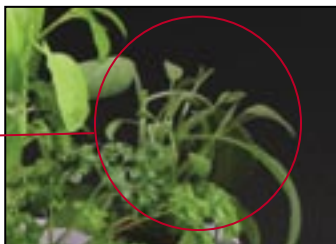


- If sage is growing taller than other plants in your Garden, cut back the top of plant.

Prune just above a set of leaves and not more than 1/3 of the way down the stem.



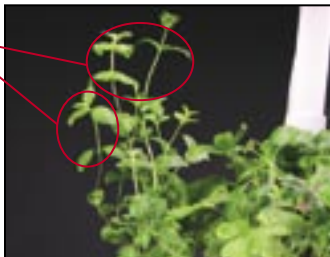
This is what your sage might look like after harvesting.



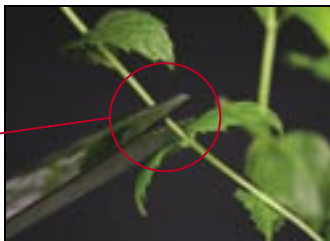
Harvest Mint and Epazote

- Harvest outermost stems and any branches that shade other plants, as well as tallest stems that are growing into light(s).

Mint shown, but instructions also apply to epazote.



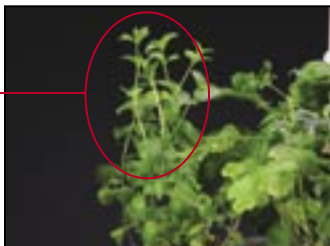
- Prune just above a set of leaves (growth point), and not more than halfway down the stem.



Epazote only:

- Cut or pinch off large leaves and longer shoots where they meet the stem. Also remove leaves that shade the lower parts of epazote plant.

This is what your mint might look like after harvesting.

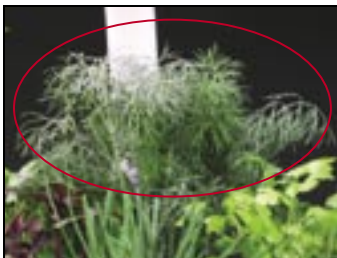


Continued on next page

Harvest Your Garden *(Continued)*

Harvest Dill

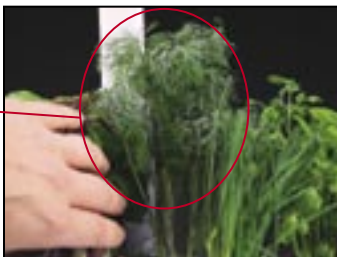
Harvest dill where two stems join (termination point).



- Find termination point by looking near the base of dill plant.
- Cut wider of the two stems.



This is what your dill might look like after harvesting.



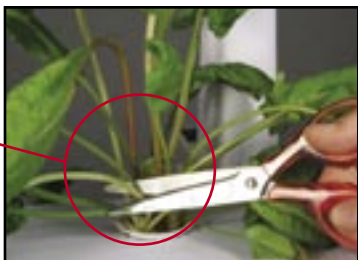
Harvest Sorrel

Harvest sorrel weekly to keep plant productive and prevent it from shading other plants in your Garden.

Photos show a single sorrel plant pod to illustrate how leaves spread out over Grow Surface. With a full garden, you will need to go underneath other plants to harvest sorrel.



Harvest sorrel at plant base. Select the largest leaves and any that shade other plants in the Garden.



This is what your sorrel might look like after harvesting.



Continued on next page

Harvest Your Garden *(Continued)*

Harvest Basil (all varieties except Globe)

To keep basil plants productive and flavorful, focus harvesting on the following 3 areas...

Basil plant ready for harvesting.



Large Leaves

Cut or pinch off large leaves that shade lower parts of basil plant. (This harvest will yield just a few leaves.)



Stems

For larger quantities, and to keep the basil plant bushy, cut stem just above a set of leaves but not more than halfway down the stem. Never harvest more than 1/3 of the plant at any one time.



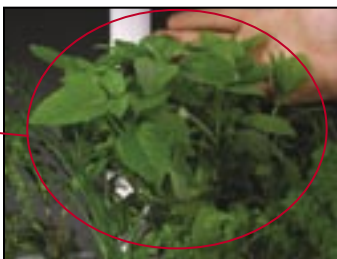
Select branches that shade other plants in your Garden.

Uppermost Leaves

Continue weekly pinching of the uppermost leaves of basil plant (see "Pinch Basil" on page 9).



This is what your basil might look like after harvesting.



Harvest Globe Basil

Prune just above a set of leaves (growth point) and not more than 1/3 of the way down the stem.

Note: Globe Basil grows in a compact, round shape – leaves may need to be gently pushed aside to reach a stem during harvesting.



This is what your globe basil might look like after harvesting.



Reminders About Planting Your Garden

Please use the **Quick Start Guide** included in your original AeroGarden box for more detailed setup instructions. If you no longer have your *Quick Start Guide*, you can find the latest version of it at... www.aerogardensupport.com.

Setting up Your Garden

- 1 Is the *Lamp Arm* firmly inserted into the *Base*?
- 2 Are *Grow Bulb(s)* firmly inserted into *Lamp Hood*?
- 3 Is *Lamp Cord* plugged into *Lamp Hood*?
- 4 Is *Bowl* securely placed in *Base**?
- 5 Is there water in *Bowl* up to "Fill To Here"?
- 6 Is *Lamp Hood* at lowest setting?

Planting Your Garden

- 7 Is there a *Seed Pod* in every *Grow Surface* opening?
- 8 Did you put a *Dome* on each *Seed Pod*?

- 9 Did you add *Starting Nutrient* tablet(s)?
- 10 Did you record planting date on the cover of this Guide?

Starting Your Garden

- 11 Did you plug in AeroGarden?
 - Are *Grow Bulb(s)* on?

Replanting Your Garden (if this is not your first planting)

- 12 Did you reset the nutrient timer on your AeroGarden? (See "Replanting Your AeroGarden" in *Quick Start Guide*.)

* If your AeroGarden has an *Air Hose*, connect it to the *Bowl* at this time.

Questions & Answers – Light(s)

Do I need to turn light(s) on and off manually?

No. Your AeroGarden includes a built-in timer that turns your light(s) on and off at specific intervals. These intervals are designed to maximize the growth of your plants. The timing system started as soon as you plugged in your AeroGarden.

Does it matter what time of day the light(s) go off?

No. It makes no difference to the plants when your light(s) go on and off. Some people like to have them turn off when they go to bed and come on in the morning when they wake up. Others prefer to use the AeroGarden as a nightlight.

Can I change the time of day the light(s) go OFF?

On select models – yes. If it is possible to change the time your light(s) go off, instructions will be found in the “*Personalize Your Light Timer*” section of your *Quick Start Guide*.

Set Your Light Timer

Your AeroGarden has light(s) and a built-in timer that automatically provide your plants with the optimal amount of light needed to grow an abundance of herbs.

If the option is available to set the light timer* on your AeroGarden, you will find instructions in the “*Personalize Your Light Timer*” section of your *Quick Start Guide*.

* *Not available on all AeroGarden models – consult Quick Start Guide – available at www.aerogardensupport.com.*

Troubleshooting

What do I do when a *Grow Bulb* burns out?

Replacement bulbs can be ordered from your retailer or at www.aerogardensupport.com.

What should I do if my *Grow Bulb(s)* aren't working?

Make sure *Grow Bulb(s)* are firmly inserted in the *Lamp Hood*. Also check that your Garden is plugged into a working electrical outlet and the *Lamp Cord* is plugged into the *Lamp Hood*.

What if I want to move my Garden to another location?

Go right ahead! Keep in mind that each AeroGarden model has different features. Unplugging a Garden in the middle of its growth cycle could cause your AeroGarden's light timer to reset. *Before moving your AeroGarden, consult your Quick Start Guide to see how the light timer is affected when your model is unplugged.*

To move your AeroGarden, be sure to pick it up by holding the *Lamp Arm* with one hand and sliding your other hand under the bottom of the *Base*.

My Garden doesn't look healthy. What can I do?

If you are concerned about the health of your Garden, please go through the following...

- Keep light(s) as close to plants as possible, without leaves touching the *Grow Bulb(s)*.
- Replace *Grow Bulb(s)* after 6 months of use (see *Quick Start Guide* for model-specific instructions).
- Follow the harvesting instructions on pages 11-20.
- Don't use softened or well water.
- Make sure your garden is in a location that is not too hot (70°F or 21°C maximum).
- Only harvest up to 1/3 of each *Seed Pod* every few days.

What if I see bugs?

Occasionally, bugs might decide to visit your herbs. If you see bugs, you will probably see aphids or spider mites which probably found their way into your home on clothing or cut flowers. They are clever about hiding under leaves and in the joints between leaves and plant stems, so they can be difficult to see at first.

Initial signs that you have aphids are either your plants look unhealthy or you may see a sticky substance on your AeroGarden's *Grow Surface*. Spider mites look like tiny gray dots on the underside of leaves. Heavy infestation will leave noticeable webs on the tops of plants.

This is the easiest way we've found to get rid of bugs:

- 1** Unplug AeroGarden and remove the *Bowl* from the *Base*.
- 2** Carefully lift entire *Seed Pod* and plant out of the *Grow Surface*.
- 3** Turn plant upside down in a sink and gently run room temperature water over the underside of leaves to rinse bugs off.
- 4** Check your plant for any remaining bugs – rinse again if necessary – and then return plant and *Seed Pod* to the AeroGarden.
- 5** Check all surrounding plants to make sure bugs haven't spread. If they have, follow the above steps with any other buggy plants.
- 6** Replace *Bowl* on *Base* and plug in AeroGarden.

Continued on next page

Troubleshooting *(Continued)*

How do I take care of my Garden when I go out of town?

Add water to raise the level up to “*Fill To Here.*” A newly planted Garden with *Domes* removed may not need care for up to 2 weeks. However, if your Garden is mature and you will be out of town for several days, we recommend that you make arrangements for someone to care for your Garden while you are away.

What do I do when my Garden has completed its growth cycle?

For step-by-step instructions regarding the care of your AeroGarden after plants have stopped growing, refer to the “*Prepare for your Next Garden*” page in your *Quick Start Guide*.

**Quick Start Guides available at:
www.aerogardensupport.com**

Replace Bulb(s)

Grow Bulb(s) should be replaced after 6 months of use. See “*Replace Grow Bulb(s)*” in your *Quick Start Guide* for replacement instructions.

Replacement bulbs can be ordered from your retailer or at www.aerogardensupport.com.

The **AeroGarden**[™]

AeroGrow International, Inc.

Quick Start Guides available at:
www.aerogardensupport.com