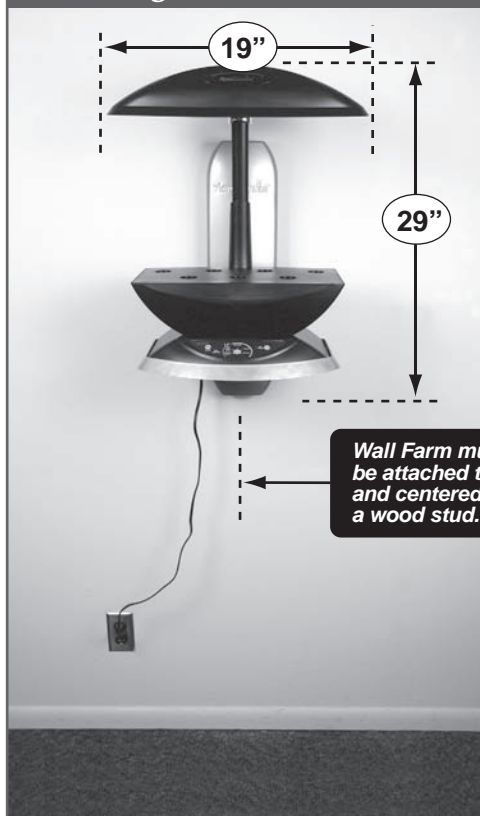




Wall Farm Deluxe Single Assembly & Installation Instructions

Selecting Wall Farm Location



Place your Wall Farm in a location with:

- 29" height to allow space for the full extension of raised lamp hood.
- 19" width
- Easy access to a standard electrical outlet (110V, polarized)

Away from:

- Direct sources of heat (e.g., stove, furnace vents)
- Direct sources of cold (e.g., window drafts, A/C vents)

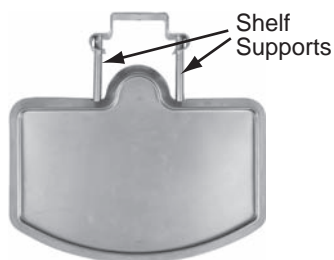
Tools Needed

You will need the following tools to assemble and install your Wall Farm:

- Tape Measure
- Pencil
- Drill
- 13/64" Drill Bit (or smaller, e.g., 5/32")
- Phillips Head Screwdriver

Unpack Your Wall Farm

Box Contents:



1 AeroGarden Shelf with Mounting Bracket



1 Top Mounting Bracket



4 Screws



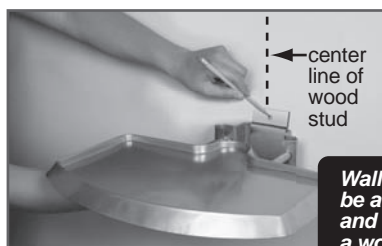
Cut Outs

1 Top Cover Plate

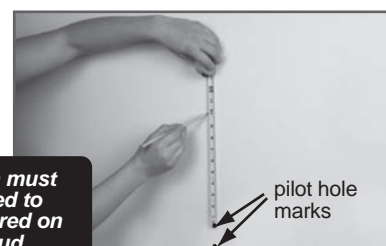


1 Bottom Cover Plate

Mark and Drill Pilot Holes



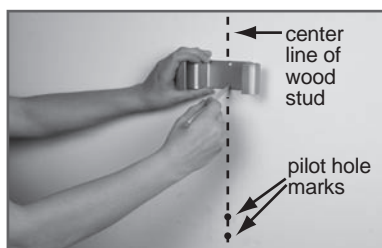
Wall Farm must be attached to and centered on a wood stud.



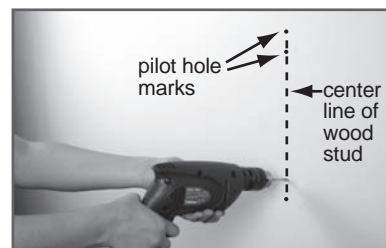
- 1 Locate and mark center line on **wood stud**.

Hold AeroGarden Shelf with Mounting Bracket at desired height and mark locations for pilot holes.

- 2 Measure up 10" from top pilot hole mark and mark wall for Top Mounting Bracket.

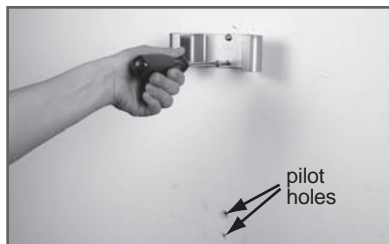


- 3 Place base of Top Mounting Bracket at mark made in Step 2 and mark locations for pilot holes.



- 4 Drill four 1-1/2" deep pilot holes with 13/64" drill bit.

Install Shelf



- 5** Screw *Top Mounting Bracket* into top set of pilot holes with provided screws.



- 6** Screw *AeroGarden Shelf with Mounting Bracket* into bottom set of pilot holes.

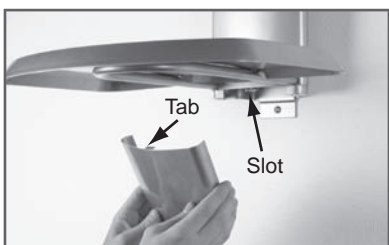


- 7** Place *Top Cover Plate* over *Shelf* so that *Cut Outs* fit over *Shelf Supports*.

Hint: Angle Cover Plate slightly away from wall.



- 8** Push *Top Cover Plate* toward wall until it connects with *Top Mounting Bracket*.



- 9** Slide *Bottom Cover Plate* into place below *AeroGarden Shelf* so that *Tab* connects with *Slot*.

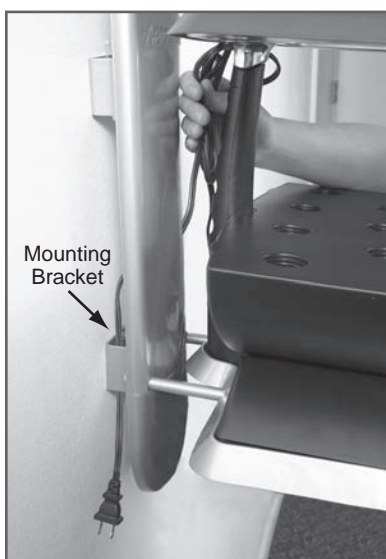


- 10** Gently push *Bottom Cover Plate* to secure to *Shelf Mounting Bracket*.

- 11** Place AeroGarden on shelf. Run electrical cord behind *Cover Plate* and down through *Mounting Bracket*.

If needed, use a 16 gauge (or heavier) extension cord to reach outlet.

***Congratulations...
You have installed
your Wall Farm!***



LIMITED WARRANTY

What Is Covered

This warranty covers any defects in materials or workmanship, with the exceptions stated below.

How Long Coverage Lasts

This warranty runs for one (1) year from the date of original purchase, for the original purchaser/user.

What is Not Covered

The warranty shall not apply to problems arising from: normal wear; failure to adhere to enclosed assembly and installation instructions; serial-numbered products if the serial number has been removed or defaced; products subject to negligence, accident, improper use, maintenance or storage; products damaged by circumstances beyond AeroGrow International, Inc.'s control; loss or damage to removable parts; or products modified (including, but not limited to, modifications through the use of unauthorized parts or attachments) or repaired by anyone other than AeroGrow International, Inc., or its designee. This warranty excludes all incidental or consequential damages.

What AeroGrow Will Do

AeroGrow International, Inc., at its option, will repair any defects in materials or workmanship or will replace this product with one of similar features and price. AeroGrow International, Inc.'s sole obligation and your exclusive remedy under this warranty shall be limited to such repair or replacement.

To Return This Product

See our website at www.aerogrow.com for instructions. Do not return products to AeroGrow International, Inc. without our prior consent. Unauthorized returns, as well as C.O.D. shipments, will be refused.

Due to continuing improvements, actual product may differ slightly from the product described herein. Some states do not allow the exclusion or limitation of incidental or consequential damages, so the above limitation or exclusion may not apply to you. This warranty gives you specific legal rights, and you may have other legal rights that vary from state to state. If you have any questions please feel free to contact our customer service representatives at customerservice@aerogrow.com.

AeroGrow International, Inc., P.O. Box
18450, Boulder, CO 80308

Customer Service

**If you have any questions
please feel free to contact
Customer Service:**

1-800-476-9669

or email:

info@aerogrow.com